

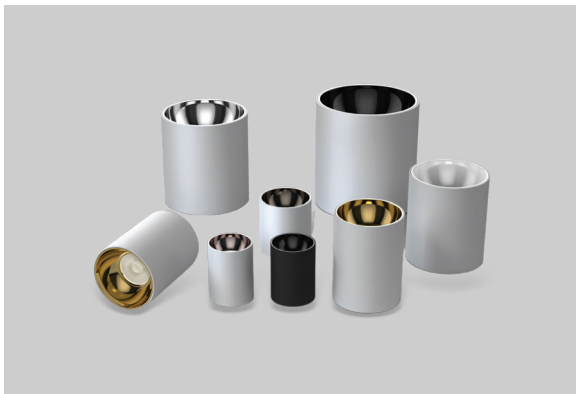


ZERON

NEW LIGHT NEW LIFE

Downlight Surface Mounted

ZERN-J02FSMZ



3.000K 4.000K 5.000K 6.000K

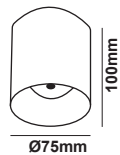
■ Specification

Daya (W)	Input Voltage	Frequency Amp	LED Efikasi	Total Lumen	CRI	Temperatur Warna	Proteksi	Beam Angle	Material
10W	AC100-277V	50/60Hz	120Lm/W	1.200Lm	>80Ra <i>Optional (>90Ra, >95Ra)</i>	3000K/4000K/5000K/6000K	IP65	20°/40°/60°	Die Casting Aluminium
15W	AC100-277V	50/60Hz	120Lm/W	1.800Lm	>80Ra <i>Optional (>90Ra, >95Ra)</i>	3000K/4000K/5000K/6000K	IP65	20°/40°/60°	Die Casting Aluminium
20W	AC100-277V	50/60Hz	120Lm/W	2.400Lm	>80Ra <i>Optional (>90Ra, >95Ra)</i>	3000K/4000K/5000K/6000K	IP65	20°/40°/60°	Die Casting Aluminium
30W	AC100-277V	50/60Hz	120Lm/W	3.600Lm	>80Ra <i>Optional (>90Ra, >95Ra)</i>	3000K/4000K/5000K/6000K	IP65	20°/40°/60°	Die Casting Aluminium
40W	AC100-277V	50/60Hz	120Lm/W	4.800Lm	>80Ra <i>Optional (>90Ra, >95Ra)</i>	3000K/4000K/5000K/6000K	IP65	20°/40°/60°	Die Casting Aluminium
50W	AC100-277V	50/60Hz	120Lm/W	6.000Lm	>80Ra <i>Optional (>90Ra, >95Ra)</i>	3000K/4000K/5000K/6000K	IP65	20°/40°/60°	Die Casting Aluminium
60W	AC100-277V	50/60Hz	120Lm/W	7.200Lm	>80Ra <i>Optional (>90Ra, >95Ra)</i>	3000K/4000K/5000K/6000K	IP65	20°/40°/60°	Die Casting Aluminium
80W	AC100-277V	50/60Hz	120Lm/W	9.600Lm	>80Ra <i>Optional (>90Ra, >95Ra)</i>	3000K/4000K/5000K/6000K	IP65	20°/40°/60°	Die Casting Aluminium

Model : ZERN-J02FSMZ-10W



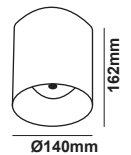
Dimension (mm)



Model : ZERN-J02FSMZ-40W



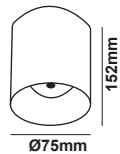
Dimension (mm)



Model : ZERN-J02FSMZ-15W



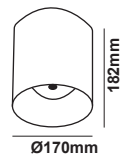
Dimension (mm)



Model : ZERN-J02FSMZ-50W/60W



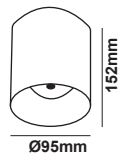
Dimension (mm)



Model : ZERN-J02FSMZ-20W



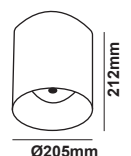
Dimension (mm)



Model : ZERN-J02FSMZ-80W



Dimension (mm)



Model : ZERN-J02FSMZ-30W



Dimension (mm)



- * Easy maintenance
- Modular LED for easy replacement
- Opening and closing possible of LED module part and power supply part
- Customizable beam angle
- Temperature max 50°

